

# SEARS

*Spring through Summer 1960*



INDEX STARTS ON PAGE 613 IN BLUE SECTION

SEARS, ROEBUCK AND CO., MINNEAPOLIS 1, MINN.

*Satisfaction guaranteed or your money back*

*Shop the Sears Telephone way  
See page 636 to 639 for numbers to call  
See page 649 for Order Blanks*





**[1] The New Shoulder Line**, emphasized by a wide, square neckline... our copy of a French import dress of fine quality cotton Oxford cloth. Back zipper; fully lined bodice. Hand wash separately. Gloves sold on page 14. *Order correct size.*

*Misses' sizes 10, 12, 14, 16, 18.*

V31 K7114—Black and white print. Shpg. wt. 1 lb. 8 oz. ...\$15.50

*Tall Misses' 12T, 14T, 16T, 18T.*

V31 K7128—Black and white print. Shpg. wt. 1 lb. 8 oz. ...\$16.50

**[2] Draped Sleeves**, subtly balanced by a narrowed decolletage in our exact copy of this French import. Handsome pure silk fabric with a linen-like texture. Low neckline and zipper in back; French-contoured belt. Dry clean. *Misses' sizes 10, 12, 14, 16, 18.* *Order correct size.* Shpg. wt. 1 lb. 8 oz.

V31 K7835—Black

V31 K7836—Beige.....\$29.50



**Veiled Swirl-Clip Hat.** Fits all. *State color black (rayon velvet); or straw-cloth in white, canary yellow, parakeet (aqua) blue, lt. beige.*

V70 K 1885—Shpg. wt. 8 oz. ....\$3.97

**Clutch Bag.** Tuck-in chain handle. Rayon satin lined. Coin purse, mirror. About 9x6 in. 10% Fed. Exc. Tax incl. 88 K 1147E—Black patent-look plastic 88 K 1146E—White pearl-tone plastic 88 K 1148E—Bone (ivory) leather-look plastic. Shpg. wt. 1 lb. 4 oz. \$5.47

**Featherlite® Cling Sandal.** Leather sole, slender 2½-inch unbreakable heel. *Sizes: AA (narrow) 7, 7½, 8, 8½, 9.*

B (med.) 5½, 6, 6½, 7, 7½, 8. *State size and width.* Wt. 1 lb. 9 oz. X54 K 6320A—Black patent, clear vinyl X54 K 6321A—White luster calf, vinyl X54 K 6322A—Bone luster calf, vinyl. ....\$9.90

\*Registered U.S. Patent Office





*imported, then faithfully  
copied by Sears in  
fine American fabrics*

The Fluid Silhouette stars for evening in the airiest and most feminine of fabrics, nylon chiffon. Softly draped bodice with billowy skirt worn over a bare-top, fully lined sheath which is, in fact, another dress. Back decolletage and zipper. French-contoured belt. Dry clean. Shipping weight 2 pounds.

Misses' sizes 10, 12, 14, 16, 18. State size.  
V31 K 7730—Violet and peacock  
blue floral print on white.....\$24.50

For shipping information  
... see page 7

The Jewelry . . in choice of gold color with topaz or emerald aurora or silver color with sapphire. State choice. 10% Fed. Exc. Tax incl.  
4K3889E—Necklace adj. to 16 in. Wt. 4 oz. \$3.98  
4K3891E—Bracelet. 7-inch. Wt. 2 oz. 2.00  
4K3890E—Earrings. 1¼ in. clip. Wt. 2 oz. 2.00  
4K3892E—Pin. 2¾-inch. Wt. 2 oz. 2.00





**Necklace and Earring Set.**  
Mock pearls and aurora  
crystals... for summer ele-  
gance. 2-row necklace ad-  
justs 13½ to 16 inches.  
Earrings, clip back. ¾-  
inch. 10% Fed. Exc. Tax  
included. *State color:* yel-  
low, pink or blue.

4 K 3899E—Wt. 4 oz. \$3.98

See page 7 for shipping information



*Sing a song of summer*

**A Subtle Bell Silhouette** shaped with the  
finesse of the French couture. Copied by  
Sears in a rayon and cotton fabric that  
looks like pure heavy linen. The details  
of its flawless tailoring; notched neck-  
line and hemline, outlined with stitch-  
ing; French-contoured belt and a full  
lining. Dropped shoulder; front skirt  
panel with hidden pockets. Hand wash  
separately. Shpg. wt. 1 lb. 11 oz.

*State Misses' size* 10, 12, 14, 16, 18.

V31 K 7116—Canary yellow

V31 K 7117—Lime green. .... \$14.50

**Feather Pillbox Hat.** Fits all sizes.  
*Please state color:* all canary yellow, all  
white; black with white, or royal blue  
with light blue.

V78 K 1840—Shpg. wt. 8 oz. .... \$6.97





# in CANARY YELLOW

**1** The Couchman Dress in out-sized woven checks of cotton and Arnel triacetate. Fashioned with emphatic collar, a great sweep of skirt and a sextet of pearl-look buttons. Hand-bound buttonholes. Step-in style. Hand wash separately. *State Junior size 7, 9, 11, 13, 15.* V31 K 7620—Canary yellow V31 K 7621—Turquoise green. Shpg. wt. 1 lb. 12 oz. \$16.50

**2** The Shirtwaist interpreted here with an ingenious flair, unmistakably continental. In balance, big patch pockets and a wide skirt. Step-in style of Arnel triacetate and cotton broadcloth; hand wash separately. Shpg. wt. 1 lb. 8 oz. *Misses' sizes 8, 10, 12, 14, 16, 18.* X 31 K 6346—Canary yellow X 31 K 6347—Parakeet blue (light). *State size.* ..... \$10.50

Leather Clutch Bag. Rayon lined. 11x4 in. 10% Fed. Exc. tax incl. 88 K 495E—Canary yellow 88 K 494E—Parakeet (aqua) blue 88 K 493E—Flamingo pink 88 K 496E—White. Wt. 1 lb. \$3.97

Square throat pump with pointed toe. Leather sole, 2 $\frac{3}{4}$ -inch heel. *Sizes: AA (Narrow) 7, 7 $\frac{1}{2}$ , 8, 8 $\frac{1}{2}$ , 9. B (medium) 5 $\frac{1}{2}$ , 6, 6 $\frac{1}{2}$ , 7, 7 $\frac{1}{2}$ , 8, 8 $\frac{1}{2}$  and 9.* *State size and width.* Wt. 1 lb. 9 oz. X54 K 6473—Canary yellow kid X54 K 6474—Parakeet blue kid X54 K 6475—Flamingo orange kid ..... \$10.70

Leghorn Straw Sailor Hat. Grosgrain band, streamers. Fits 21 $\frac{3}{4}$  to 22 $\frac{3}{4}$  in. Shpg. wt. 2 lbs. 4 oz. V78 K 1810—Leghorn yellow. \$4.97



**1**

**2**





**1 Woven Checks** of cotton and Arnel triacetate broadcloth. Delightful coat dress with organdy ruching, French-contoured belt. Hand wash separately. Shipping weight 1 lb. Misses' sizes 8, 10, 12, 14, 16, 18. Order correct size.  
 V31 K 7120—Lilac and white  
 V31 K 7121—Turquoise and white ..... \$12.50

**2 Polka Dots** on an easy-care fabric of cotton and Arnel triacetate. Step-in style; roll-up sleeves; shoulder yoke and center pleat in back of bodice. Hand wash alone; drip dry. Misses' sizes 10, 12, 14, 16, 18. State size. Shpg. wt. 1 lb.  
 X31 K 6348—Lilac and violet dots on petal lilac  
 X31 K 6349—Bright green, lime dots on petal green.. \$10.50

**Pillbox Hat.** Crisp, sewn straw braid, all the more beautiful for its gleaming rayon satin bow. Veil. Fits 21¼ to 22½ in. State color white, black, light beige or navy.  
 V78 K 1935—Shipping weight 8 ounces..... \$4.97



## the SHIRTWAIST

Lilac Jewelry . . sprightly green leaves and rhinestone accents to brighten any costume. 10% fed. exc. tax incl. Shpg. wt. each 2 oz.  
 4 K 3782E—Pin with safety catch. 3¼-in. \$2.00  
 4 K 3783E—Earrings, clip back. 1¼ in. . . 1.00





## ... a Beautiful Classic

Pure Silk Broadcloth faultlessly tailored with mitered collar and cuffs detailed with rows of fine stitching. Falling free, the skirt's unpinned, double box pleats. Step-in style; buttoned cuffs; French-contoured belt. Hand wash separately.

Misses' sizes 10, 12, 14, 16, 18.

Order correct size. Shipping weight 1 lb.

V 31 K 7762—Lilac

V 31 K 7763—Light beige

V 31 K 7764—Light blue ..... \$21.50

MEASURE TO BE SURE... complete how-to-measure information and charts on page 646

SHIPPING INFORMATION. Catalog numbers beginning with "V31" and "V78" shipped from Philadelphia or Chicago; with "X31" shipped from Philadelphia, Chicago, Kansas City or Atlanta; with "X54" shipped from Philadelphia, Chicago, Kansas City or Atlanta; with "V54" shipped from Chicago or Philadelphia. Allow postage from your mail order house.

Handbag. Our plastic beadette pouch has such a fresh, summery look, goes with everything you wear. Wipes clean. Rayon lined. About 15x8 in. 10% Fed. Excise Tax incl.  
88 K 1082E—Pastel multicolor  
88 K 1080AE—Chalk white  
Shpg. wt. 1 lb. 8 oz. .... \$5.97





# it's SHEER romance



3

**1** Billowy Rayon Chiffon fashions this enchanting shirt-waist, elegant in its simplicity. Step-in style with tucking in front. Fully lined with acetate taffeta. Dry clean. Jewelry sold on page 3. *Misses' sizes 10, 12, 14, 16, 18; Half sizes 12½, 14½, 16½, 18½, 20½, 22½. Please order correct size.*  
V31 K 7828—Beige  
V31 K 7829—Medium copen blue  
V31 K 7830—Black  
Shpg. wt. 1 lb. 1 oz. . . . \$7.50

**The Picture Hat** . . . romantic, unforgettable. Wide-brim straw with flowers and rayon velvet band. *State color beige (as shown); black with white; or all white. Fits 21¼ to 22½ in.*  
V78 K 1890—Wt. 2 lbs. 6 oz. \$14.97

**2** Misty Rayon Chiffon drifts over acetate taffeta in an intriguing dress with deep "V" in the underbodice, front and back. A full skirt billows out from the draped cummerbund. Back zipper. Dry clean. *Misses' sizes 8, 10, 12, 14, 16, 18. Please state size.*  
V31 K 7831—Dark coffee brown  
V31 K 7832—Black  
V31 K 7833—Deep peony rose. Shpg. wt. 1 lb. 8 oz. \$15.50

**3** Aurora crystal Jewelry of beautifully cut iridescent beads. 10% Federal Excise Tax included.  
4 K 3876E—3-row necklace, adjusts 14½ to 16½ in. Wt. 16 oz. \$8.98  
4 K 3877E—1-row necklace, adjusts 14 to 16½ inches. Wt. 4 oz. \$3.98  
4 K 3878E—Shower drop earrings, clip back. 1¼ in. Wt. 3 oz. \$3.98  
4 K 3879E—Bracelet. Wt. 3 oz. 3.98

**4** Tintable pump . . . dye it to match your colorful outfit. Lather sole, 2¾-inch unbreakable heel. Silk-look fabric. Shpg. wt. 1 lb. 9 oz. *Sizes: AA (narrow) width 7 to 9. B (medium) width 5¼ to 9. Half sizes too. Please state size, width.*  
V54 K 6325—White  
V54 K 6324—Black . . . . . \$8.70



1



2



4





**1** Silk Organza, crisp and lustrous, fashions a dramatic dress you can wear three ways. Wear the sheath with or without its peplum, or wear the peplum as a capelet. Acetate taffeta lining. Back zipper. Dry clean. *State size.* Junior sizes 7, 9, 11, 13, 15. Shpg. wt. 14 oz. V31 K 7084—Med. blue V31 K 7085—Black.....\$12.84

**2** Rayon Chiffon, graceful and flattering in every detail. Rows of dyed-to-match lace on tucked bodice and midriff. Back zipper. Acetate taffeta lined. Dry clean. Bag sold on page 10. Shpg. wt. 1 lb. 5 oz. *Fits Juniors and Misses. State size* 7-8, 9-10, 11-12, 13-14, 15-16. V31 K 7091—Black V31 K 7090—Red.....\$14.50

**3** Nylon Chiffon brushed with vivid color creates this exciting bouffant fashion. Cowl collar is V'd in back with zipper. Acetate taffeta lining. Dry clean. *State size.* Wt. 1 lb. 8 oz. *Misses' sizes* 12, 14, 16, 18, 20. X31 K 6344—Gold and brown on yellow X31 K 6345—Copen blue and green on white.....\$10.84 *Tall Misses' 12T, 14T, 16T, 18T, 20T.* X31 K 6356—Gold and brown on yellow X31 K 6357—Copen blue and green on white.....\$11.84

For shipping information please see page 7

Also Tell Misses' sizes



## for the BELLE..

**Flocked Dots** on a cloud of sheer nylon organdy. Rayon velvet ribbon straps, bows. Side zipper; fully lined; net petticoat. Short bouffant. Dry clean. Shipping weight 1 lb.

*Fits Juniors and Misses. State size 7-8, 9-10, 11-12, 13-14, 15-16.*

**V31 K 8150C**—Black dots on white.

**V31 K 8151C**—Pastel blue dots on white.....\$48.50

**Billowy Nylon Tricot** with a full, full skirt. Pleated bodice and set-in cummerbund. In back... V-neckline and zipper. Fully lined; net petticoat. Short bouffant. Dry clean.

*Misses' sizes 10, 12, 14, 16, 18, 20. State size.*

**V31 K 8155**—Light green

**V31 K 8156**—Light pink

**V31 K 8157**—White

Shipping weight 2 lbs. 3 oz.....\$18.50

**Roses Bloom** on sheer white nylon organza. Fully lined; net underskirt. In back... deep V-neckline, bow and streamers; zipper. Short bouffant. Dry clean. Shipping weight 2 lbs.

*Juniors' sizes 7, 9, 11, 13, 15. State size.*

**V31 K 8160C**—Rose and green print

**V31 K 8161C**—Yellow gold and moss

green print.....\$14.50

**Simulated Pearls** with aurora stones and enamel accents. *State* gold color with pink, yellow or Mint green.

**4 K 3903E**—Necklace adjusts to 15½ inches.

**4 K 3904E**—1½ inch clip back earrings

**4 K 3905E**—7 inch bracelet

Shipping weight each 2 oz.....Each \$2.50

**Formal Glove.** Double woven nylon. 3 sham pearls inside wrist. About 22 in. long. Hand wash. Shpg. wt. 3 oz. *State size 6½, 7, 7½, 8.*

**88 K 5401**—White.....\$2.97

**Bow-handle Clutch Bag.** Rayon satin. Coin purse, mirror. Lined. About 8¾x5¾ in. 10% Fed. Exc. Tax included.

**88 K 1068E**—Pink

**88 K 1070E**—Light aqua blue

**88 K 1069E**—Black

Shpg. wt. 1 lb.....\$5.97



## or the BRIDE...

**The Bridesmaid's Dress**, sheer nylon organza. Fully lined; net petticoat, boned bodice. Flower included. Dry clean. Misses' sizes 10, 12, 14, 16, 18. *State size.* Shpg. wt. 3 lbs.

*Long length*  
V31K8165C—Yellow

V31K8166C—Lt. aqua blue

V31K8167C—White. \$21.50

*Waltz length*

V31K8168C—Yellow

V31K8169C—Lt. aqua blue.

V31K8170C—White. \$19.50

Dresses on these 2 pages shipped from Philadelphia or Chicago, whichever is nearer, others from mail order house. Allow postage from mail order house.

**The Wedding Gown** interpreted in beautiful Chantilly-type lace of nylon and acetate with nylon net. Molded bodice with buttoned sleeves, skirt of net ruffles with overskirt of scalloped tiers. Side zipper. Dry clean. Misses' sizes 8, 10, 12, 14, 16, 18. *State size.*

V31K8171C—White (long length). Shpg. wt. 4 lbs. \$34.50

V31K8172C—White (waltz length). Shpg. wt. 3 lbs. \$29.50

**Nylon Tulle Veil** with pretty "halo" crown. White. (Shipped from factory in New York City. Allow postage from mail order house.) Shpg. wt. 3 lbs.  
F78 K 1855—Fingertip. \$19.97  
F78 K 1856—Shoulder length.... \$15.97

**For the Bride's Mother**... ray on and nylon lace over acetate taffeta. Back has V-neck, looped taffeta streamers, zipper. Dry clean. *State Misses' size* 12, 14, 16, 18, 20. Wt. 2 lbs.  
V31 K 8175—Lt. aqua blue  
V31 K 8176—Beige... \$19.50





# PURE SILK



**Intricate Draping . . .** a dress with subtle, assured lines. In expensive silk shantung and completely lined with sheer nylon. The same controlled pleats as in front shape the back of the skirt. French contoured belt; back zipper. Dry clean. Crystal necklace and earrings sold on page 8. *Order correct size.*  
**Misses' sizes** 10, 12, 14, 16, 18. Shipping weight 1 lb. 10 oz.  
**V31 K 7840**—Chartreuse, aqua and peacock blue print  
**V31 K 7841**—Gold, coral red and taupe print . . . . . **\$25.50**

Dresses on these 2 pages shipped from Philadelphia or Chicago, whichever is nearer. Allow postage from mail order house.



**Sheer Sophistication** in silk shantung with chiffon. A provocative dress, subtly shaped, elegantly detailed. High neckline in back; soft set in cummerbund. Fully lined; back zipper. Dry clean. *State size.* Shpg. wt. 1 lb. 8 oz.  
**Misses' sizes** 10, 12, 14, 16, 18, 20  
**V31 K 7705**—Black **\$15.50**

**Fold-over Clutch Purse** in shantung. Gold-color metal chain handle can be tucked inside. Coin purse Rayon satin lined. Folded, about 10x5 in. 10% Fed. Exc. Tax included. Shpg. wt. 1 lb.  
**B8 K 1167E**—Black **B8 K 1168E**—Navy **\$5.97**

MEASURE TO BE SURE . . .  
 see measurement charts on page 646



*makes every moment elegant*



**1** The Elongated Bodice, an important Paris look, skillfully done in sheer silk organza. Step-in dress; fully lined. Dry clean. *State Misses' sizes 8, 10, 12, 14, 16.* Shpg. wt. 2 lbs. V31 K7845—Peacock blue V31 K7846—Bright green. \$18.50

**2** A Draped Overbodice in front softens this well shaped sheath of silk shantung. Rhinestone ornament; back zipper. Dry clean. *Misses' sizes 12, 14, 16, 18, 20. Order measured same.* Shipping weight 11 ounces. V31 K7122—Peacock blue and leaf green print V31 K7123—Bright rose and moss green print. \$14.50



**3** Wide Collar, Shaped Skirt... smart interpretation of the shirtwaist. The fabric is beautiful silk shantung. French-contoured belt. Coat style. Dry clean. *State size* Shpg. wt. 1 lb 8 oz. *Misses' sizes 10, 12, 14, 16, 18.* V31 K7843—Light parakeet blue with deep parakeet blue dots V31 K7844—Navy with white dots \$19.50

**4** Coro Watch. Florentine finish. 1 jewel, anti magnetic, unbreakable mainspring. Postpaid. (Shpg. wt. 4 oz.) 4K 1658E—*State* white or yellow gold color. \$17.55

**5** Gold color chain Jewelry with mock baroque pearls, aurora crystal. Necklace adj. to 17 in. 4K3774E—14-row necklace. Shpg. wt. 4 oz. \$5.98 4K3776E—9-row bracelet. 7 1/4 in. Wt. 3 oz. 2.98 4K3775E—Earrings, clip back. Wt. 2 oz. 2.00

Items (4) and (5) include 10% Federal Excise Tax.

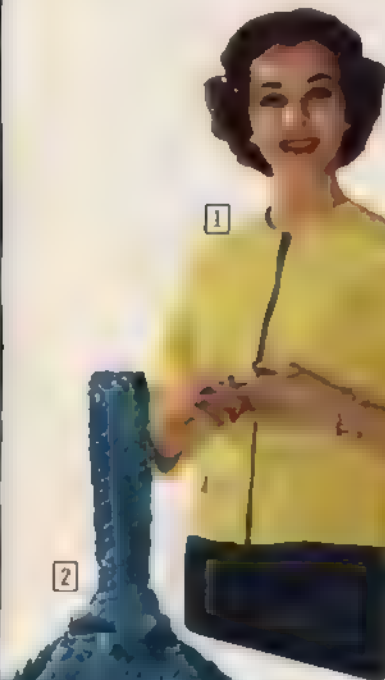
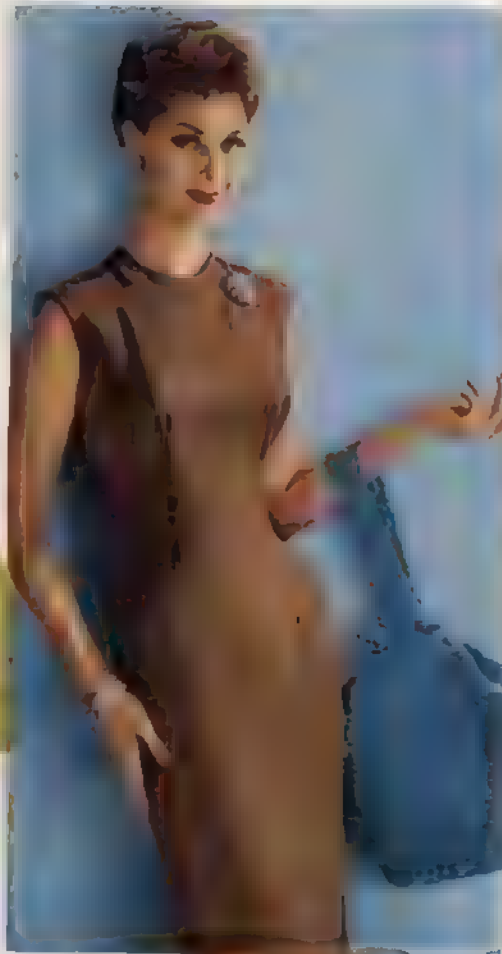




# THE SHEATH *and its*

- 1 Moygashel Irish Linen Shrug.**  
Mock pockets. Hand wash alone. *State bust size* small (30-32); medium (34-36); large (38-40) inches. Shpg. wt. 1 lb. 7 oz.  
88 K 8861—Yellow  
88 K 8863—Beige  
88 K 8862—Black ..... \$6.97

- 2 Straw Tote Bag from Italy**  
Rayon lined. About 11x14 in.  
88 K 1154E—Turquoise blue. Shpg. wt. 1 lb. 12 oz. \$5.97



- 3 Gloves.** Double woven nylon. About 14 inches long. Hand washable.  
*State size* 6½, 7, 7½, 8.  
88 K 5590—Canary yellow  
88 K 5589—Flamingo pink  
88 K 5591—Parakeet (aqua) blue  
88 K 5588—Light beige  
88 K 5587—White  
Shpg. wt. 3 oz. .... \$2.97

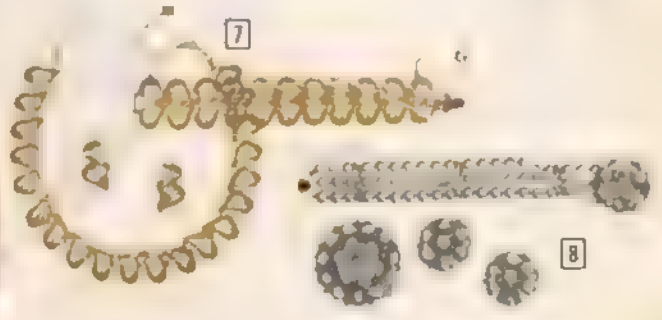
- 6 Basket Handbag** of sturdy rattan with leather trim another handsome import from Italy. Gold-color metal turn lock closing. Unlined. Room inside for everything. About 13x12 inches.  
88 K 1156E—Natural tan with brown  
Wt. 1 lb. 12 oz. .... \$9.97

- 4 Cummerbund.** Straw-look rayon. Button trim. Hook closings. Rayon faille lined. About 4 in. wide. *State waist size* 24, 26, 28 in. Shpg. wt. 5 oz.  
88 K 8167—Canary yellow  
88 K 8168—Turquoise blue. .... \$1.97

- 5 Pouch Handbag** from Italy in sparkling black straw. Long, one-piece handle pulls through double rings on each side. Button, loop closing. Size about 12x8 in. Shpg. wt. 1 lb. 8 oz.  
88 K 1153E—Black. .... \$8.97

- 7 Enameled Jewelry.** *State brown or green with yellow.* Shpg. wt. each 3 oz.  
4 K 3893E—Necklace adjusts to 15½ in. \$2.98  
4 K 3894E—1¼-in. clip back earrings \$2.00  
4 K 3895E—7½-in. bracelet . . with safety chain. .... \$2.98

- 8 Fresh water Pearls** with turquoise inserts. Wt. each 3 oz.  
4 K 3797E—3-row bracelet with cabachon clasp and safety chain. 7½ inches. .... \$6.98  
4 K 3798E—2-in. pin with safety catch. \$5.00  
4 K 3799E—1¼-in. clip back earrings. .... \$3.50





## accessories

**Moygashel Irish Linen Sheath . .**  
versatile classic in a beautiful imported fabric that is famous for its ability to wear, to wash and to shed wrinkles. Here in four important colors, it is skillfully shaped with bust and midriff darts, simply detailed with high banded jewel neckline; back zipper. Hand wash separately

*Misses' sizes 8, 10, 12, 14, 16, 18.*

*State size. Shpg. wt. 1 lb. 4 oz.*

X31 K 6350—Light spice brown

X31 K 6351—Canary yellow

X31 K 6352—White

X31 K 6353—Black . . . . . \$10.84

**High-crowned Cloche Hat.** Rayon faille. Fits 21 $\frac{3}{4}$  to 22 $\frac{3}{4}$  in. *Colors:* black, white, spice (med.) brown, lt. beige, lt. gray. *State color*  
V78 K 1820A—Wt. 1 lb. 2 oz. \$4.97

**Straw Tote Bag from Italy.** Rigid handles. Rayon lined. About 15x12 inches. Shipping weight 1 lb. 12 oz.  
88 K 1155E—Raspberry . . . \$6.77

**9 Genuine Leather Belt.** About 4 in. wide. Rayon lined. *State size* small (22-24); medium (26-28); large (30) in.  
88 K 8169—Black  
88 K 8170—White. Shpg. wt. 4 oz. \$2.97

**10 Slim Carry-all Wallet.** Morocco-grained pigskin. Rayon lined. Closed, about 7x4 in. Shpg. wt. 6 oz.  
88 K 1641AE—Black . . . . . \$3.27  
(For additional colors see page 82)

**11 Baroque Bead Jewelry . .** in either black and white enamel or fresh water pearls with aurora accents. *State choice.*  
4 K 3795E—Necklace. Adjusts to 15 $\frac{1}{4}$  in. Shpg. wt. 10 oz. . . . . \$7.50  
4K3796E—Earrings, clipback. Wt. 2oz. 2.00

**12 White Shrug.** Linen-look rayon; black Schiffler embroidery. Dry clean. *State bust size* small (30-32); medium (34-36); large (38-40) inches.  
88 K 8860—Shpg. wt. 12 oz. . . . . \$3.97

Hat shipped from Philadelphia or Chicago, whichever is nearer. Dress shipped from Philadelphia, Chicago, Kansas City or Atlanta, whichever is nearest. Allow postage from your mail order house.



## A Mary Lewis Knit made in Italy

Continental costume of Merino wool in a fine-gauge flat knit. Free-swinging jacket with knit edging of contrasting color. Pullover sweater with short raglan sleeves, buttoned back neck closing. Jacket and sweater are full fashioned by hand. Skirt has elasticized waist, 3 inch hem. Hand wash separately. *State Misses' sizes 10, 12, 14, 16, 18. Shipping wt. 2 lbs. 8 oz.*  
**V31 K 8228—White with navy blue trim**  
**V31 K 8229—Royal blue with light blue trim . . . . . \$25.50**



## Washable Knits

Orlon® Acrylic Fiber

**[1] Versatile Ensemble** includes cardigan jacket, blouse with lace-yoke and batteau neckline, slim skirt with elasticized waist. Belt included. Machine washable . . . needs no blocking. *Misses' sizes 10, 12, 14, 16, 18. Please order correct size.*  
**V31 K 8230—Turquoise blue**    **V31 K 8231—White**  
**V31 K 8232—Coral pink. Shipping weight 2 lbs. . . . . \$13.50**

**[2] Dressmaker Suit.** Jacket with fringe collar; skirt with elasticized waist. Machine wash; no blocking. Bag sold, page 5. *Misses' sizes 10, 12, 14, 16, 18. Please order correct size.*  
**V31 K 8233—Canary yellow**    **V31 K 8235—White**  
**V31 K 8234—Light copen blue. Shpg. wt. 2 lbs. . . . . \$10.50**  
*Half sizes 14½, 16½, 18½, 20½, 22½. Please order correct size.*  
**V31 K 8236—Canary yellow**  
**V31 K 8237—Light copen blue. Shpg. wt. 2 lbs. . . . . \$11.50**

**Smart Jewelry.** Lucite leaves with colored stones. *State gold with lilac or melon; or silver color with turquoise.*

**4 K 3926E—Necklace.** Adjusts to 16 in. Wt. 4 oz. **\$2.98**

**4 K 3927E—Earrings,** clip back. 1½ in. Wt. 2 oz. **2.00**

**4 K 3928E—5-row bracelet.** 7¾ in. Wt. 2 oz. **2.00**

*Jewelry prices incl. 10% Fed. Exc. Tax*



**[1]**

**[2]**



## Imported Pure Irish Linen



**Envelope Bag.** Braided ribbon and straw like toyo. Bamboo handle. Rayon lined. About 10x9 in. From Japan. 10% Fed. Exc. Tax included. Shpg. wt. 1 lb 4 oz  
88 K 1140E—White  
88 K 1141E—Natural beige... \$5.97

**1** Lace-trimmed Sheath in a fine, firm fabric. Floral applique and all around bands of dyed-to-match cotton lace. Back zipper. Hand wash alone. *Misses' sizes* 12, 14, 16, 18, 20. *Order correct size.* Shipping wt. 1 lb. 3 oz  
V31K 7106—Flamingo pink  
V31K 7107—Light green... \$14.84

**2** Big Button Dress. A slim coat style tailored with simple lines and smart details. Buttons are half-hidden by tucked panel. Hand wash separately. *Misses' sizes* 10, 12, 14, 16, 18. *Order correct size.* Shpg. wt. 1 lb 8 oz  
X31K 6326—Black  
X31K 6327—Med. parakeet blue... \$10.84

Numbers on these 2 pages beginning with "V" shipped from Philadelphia or Chicago; with "X" from Philadelphia, Chicago, Kansas City or Atlanta. Allow postage from your mail order house. Be sure to measure... see page 646.

**3** Sweater Dress. A beautifully tailored dress in an excellent quality fabric. Back zipper. Orlon® acrylic knit sweater has linen trim and beading. Hand wash separately. Shpg. wt. 2 lbs. *Misses' sizes* 10, 12, 14, 16, 18. *State size.*  
V31K7895—Lavender V31K7897—Black  
V31K7896—Light beige... \$16.84  
*State Half size* 12½, 14½, 16½, 18½, 20½, 22½  
V31K7927—Lavender V31K7929—Black  
V31K7928—Light beige... \$17.84



# for Mother and Daughter



**Rick-rack Trimmed Sundress** with gathered skirt and attached cummerbund that buckles in back in Mother's and Big Sister's sizes. Washable cotton needs little or no ironing. Color: Navy dots on white, red trim.

**Mother's, Fits Junior and Misses' sizes**

State 7, 8, 9, 10, 11, 12, 13-14, 15, 16, 17, 18

K 31 K 4392—Shipping weight 14 ounces. \$6.94

**Big Sister's, State size 7, 8, 10, 12, 14**

77 K 154—Shipping weight 8 ounces. 4.74

**Little Sister's, State size 4, 5, 6, 6x**

29 K 5507—Shipping weight 7 ounces. 3.97

**Tiny Sister's, State size 1, 2 or 3**

29 K 5261—Shipping weight 6 ounces. 3.77

**Pantalettes**, Washable cotton needs little or no ironing. Elastic waist and leg openings.

**Rick-rack trimmed ruffles, State children's**

size small (2-3), medium (4-5), large (6-6x)

29 K 5504—Navy dots on white. Wt. 5 oz. \$1.47

**Roller Hat**, Strawcloth. Grosgrain trim matches dresses on this and facing page. State navy, yellow or deep lilac trim on white.

**Mother's, Fits 22 to 22½ inches.**

V78 K 1905—Shipping weight 13 ounces. \$2.77

**Big Sister's, Fits 21 to 21½ inches.**

77 K 9424—Shipping weight 10 ounces. 2.47

**Little Sister's, Fits sizes 3 to 6x (about 21 in.)**

29 K 8048—Shipping weight 8 ounces. \$1.97

**Tiny Sister's, Fits sizes 1 to 3 (about 19 in.)**

29 K 8047—Shipping weight 6 ounces. \$1.97

**Jewelry for Mother and Daughter**, gold finish metal leaves with plastic petals. Mom's has 2 rows. Daughter's 1 row. 10% Federal Excise Tax included. Shpg. wt. sets 2 oz.

4K3770E Mom's set necklace, clip earrings. \$2.00

4K3771E 2 row bracelet 7½-in. Wt. 2 oz. 1.00

4K3772E Girl's set necklace, bracelet. 2.00







**1 Dainty Tucks and Ruffles** trim this shirtwaist dress of fine quality little-or-no-iron cotton broadcloth. Back of bodice has center inverted pleat Shirred skirt. Washable. Color: light canary yellow.

Mother's, Misses' sizes 10, 12, 14, 16, 18, 20. *State size.*  
X 31 K 4394—Wt. 13 oz. \$5.94

Big Sister's, Sizes 7, 8, 10, 12, 14. *State size.* Shpg. wt. 8 oz.  
77 K 158.....\$4.33

Little Sister's, Sizes 3, 4, 5, 6, 6x. *State size.* Shpg. wt. 5 oz.  
29 K 5506.....\$3.77



**2 Pinch Pleats and a cluster of violets** accent this pretty bouffant. Little-or-no-iron cotton broadcloth. Washable. Color: lilac.

Mother's, Misses' sizes 10, 12, 14, 16, 18, 20. *State size.*  
X 31 K 4393—Wt. 13 oz. \$5.94

Big Sister's, Sizes 7, 8, 10, 12, 14. *State size.* Shpg. wt. 8 oz.  
77 K 156.....\$4.33

Little Sister's, Sizes 3, 4, 5, 6, 6x. *State size.* Wt. 7 oz.  
29 K 5505.....\$3.77

**Plastic Tote Bag.** Unlined. 10% Fed. Exc. Tax. incl.

Mother's. About 9x10 inches. Shpg. wt. 1 lb. 10 oz.  
88 K 1182E—Black patent-look

88 K 1183E—White.....\$2.47

Big Sister's. About 8x7 inches. Shpg. wt. 1 lb. 6 oz.

88 K 1473E—Black patent-look

88 K 1476E—White.....\$1.97

Little Sister's. About 5x5 inches. Shpg. wt. 1 lb.

88 K 1478E—Black patent-look

88 K 1479E—White.....\$1.37

**Nylon Stretch Glove.** Hand wash From Japan.

Mother's. Stretches to fit. Shpg. wt. 3 oz.

88 K 5278—White 88 K 5279—Black

88 K 5280—Beige Pair.....97c

Girl's. Fits sizes 3 to 7. Shipping weight 3 oz.

88 K 5678—White.....Pair 93c

Little Girls. Fits sizes up to 2. Shpg. wt. 2 oz.

88 K 5679—White.....Pair 87c

For Hats, see facing page.

Catalog numbers on these 2 pages beginning with "X" shipped from Philadelphia, Chicago, Kansas City or Atlanta; with "V" from Philadelphia or from Chicago. Allow postage from mail order house.





## Mary Lewis Fashions

Chosen for fine style,  
fabric and workmanship

Beautiful, silky-look Perma-Smooth cotton broadcloth . . . tested and proven machine washable, drip or tumble-dry, little ironing needed. Wrinkle-resistant; mercerized for lasting sheen. Shrinkage controlled within 1%.

**1** Shirt 'n' Skirt Outfit. Shirt has buttoned tab front, roll-up sleeves, back shoulder yoke with action pleat. Deep-toned, crushed belt; skirt of unpressed pleats. *State size.* Wt. 1 lb. 5 oz. *Fits Juniors' and Misses' sizes 7-8, 9-10, 11-12, 13-14, 15-16.*  
X31 K 4342—Canary yellow  
X31 K 4343—Light parakeet blue; navy blue belt . . . \$7.84

**2** Paris Designed Shirtwaist in bold stripes with a large collar and deep cuff. Coat style; French-contoured belt; unpressed pleated skirt. *Misses' sizes 12, 14, 16, 18, 20. State size.* Shpg. wt. 1 lb.  
X31 K 5417—Fuschia, pink and white  
X31 K 5418—Medium parakeet blue, white . . . \$8.84

**3** Paris-designed Fashion with a subtly shaped neckline that is most becoming. The full skirt of unpressed pleats flows out from a wide French-contoured belt. Back zipper. *Order correct size.* Wt. 1 lb. 2 oz. *Misses' sizes 12, 14, 16, 18, 20.*  
X31 K 4352—Lt. parakeet blue  
X31 K 4353—Flamingo pink . . . \$7.84

Rayon Ribbon Beret. A most versatile hat . . . the easiest to pack for traveling. *State color* yellow, lt. beige, white or black. Shpg. wt. 9 oz.  
V78K1870—Fits 21½ to 22½ inches . . . \$3.97

Dresses on these 2 pages shipped from Philadelphia, Chicago, Kansas City or Atlanta, whichever is nearest. Hat from Philadelphia or Chicago. Allow postage from your Mail Order House.



**1** Belt with Silk Scarf colorfully accents this shirtwaist of knotty textured cotton Shag-bark Mitered stripes "square off" bodice front. Side zipper. Pin sold below

*Misses' sizes 10, 12, 14, 16, 18. State size Shpg. wt. 1 lb. 4 oz.*

**X31 K 6286**—Aqua blue, willow green and pink, blue belt, scarf

**X31 K 6287**—Lt. spice tan, gold and coral, coral belt and scarf . . . . . **\$10.84**



## Galey and Lord Cottons

Fine combed quality in exciting textures and brilliant colors . . wrinkle resistant, fabrics won't shrink over 2%. Need little ironing . . hand wash separately, drip dry.

**2** **Fringed Stole**, a smart accessory for this dress . . both in woven plaid with a fine honeycomb texture. Short sleeves with black binding, side zipper. Stole reverses to black linen-look rayon. Shpg. wt. 2 lbs. *State Misses' size 10, 12, 14, 16, 18.* **X31 K 6336**—Blue, black and green plaid . . . . . **\$10.84**

**3** **Black Vestee** tops a woven plaid shirtwaist for a striking partnership. The dress has a fine honeycomb texture; side zipper. The vestee is crisp linen-look rayon. *Misses' size 12, 14, 16, 18, 20. Order correct size. Shpg. wt. 1 lb. 12 oz.* **X31 K 6338**—Gold, black and white plaid . . . . . **\$10.84**

**4** **Florentine gold finish Jewelry** . . accented by lustrous cultured pearls. 10% Fed. Exc. Tax incl. Wt. each 2 oz.  
**4 K 3784E**—Floral pin with safety catch. 1½ inches.  
**4 K 3785E**—Earrings, clip back. ¾-inch . . . . . **\$2.00**

# COTTONS

*enriched with  
fine detailing*

**1** **Loced Yoke** lends attractive styling to the front bodice of this two-pocketed sheath. Scooped neckline in back; back zipper. Crisp, firmly woven sharkskin . . . machine wash. *Misses' sizes 12, 14, 16, 18, 20. State size.* Shipping weight 8 oz. X31 K 4388—Golden tan X31 K 4389—Light aqua blue. . . . . \$5.84



Also in Half Sizes

**2** **White Rick-Rock** gives a refreshing touch to this pretty dress in an unusual dark-toned Persian print. Scissor-cut skirt with front panel and bow at waist. Side zipper. Machine wash. *Misses' sizes 12, 14, 16, 18, 20. Order correct size.* Shpg. wt. 13 oz. X31 K 4369—Deep blue, wine and moss green. . . . . \$6.84

**4** **Welt Stitching** artfully shapes the button-back overblouse of this smart 2-pc. dress. Handsome fabric in a jacquard weave with a boundstooth effect. Machine washable. For jewelry shown, see page 36. *Fits Juniors and Misses . . . State size 7-8, 9-10, 11, 12, 13-14, 15-16.* Shpg. wt. 10 oz. X31 K 4386—Light olive green X31 K 4387—Ivory . . . . . \$5.84

**3** **Tucks and Tiny Looping** add interest to this classic shirtwaist. Tucks on front of bodice and all around the multi-gored skirt. Side zipper. Hand wash separately. *Misses' sizes 12, 14, 16, 18, 20; Half sizes 14½, 16½, 18½, 20½, 22½. State size.* Shipping wt. 1 lb. X31 K 5419—Parakeet blue X31 K 5420—Flamingo pink \$9.84

**5** **Nylon Glove.** Stretch panels . . . give smooth contour fit for sizes 6 to 8. Machine wash. Shpg. wt. 3 oz. 88 K 5458A—Canary yellow 88 K 5459A—Flamingo pink 88 K 5460A—Parakeet blue 88 K 5457A—Lt. beige 88 K 5456A—White. . . \$1.97

For other cotton dresses in *Misses' sizes* see the following pages. 18, 19, 20, 21, 23, 24, 54, 55, 58, 59, 62, 63, 64, 65 and 68.



# COTTONS

*blossoming with embroidery*



3] Popular Baroque Bead Jewelry . .  
in green, pink or yellow. *State choice.*  
4 K 3885E—60-in. rope. Wt. 4 oz. \$2.98  
4K3886E—Earrings, 1-in. clip Wt 2 oz. 1.00  
Prices include 10% Fed. Exc. Tax

4] Panels of Tiny Flowers in white  
embroidery give slim lines to coat  
ress. Little-iron broad cloth; machine  
wash. Shpg. wt. 1 lb  
*Misses' sizes 14, 16, 18, 20; Half sizes*  
14½, 16½, 18½, 20½, 22½. *State size*  
X31 K 4376—Light sage green  
X31 K 4377—Black. . . . . \$7.84

5] Big Flowers, in a cut-out design,  
embroidered on the back bodice and  
sleeves. Shirtwaist in little-iron broad  
cloth . . machine wash. Shpg. wt. 14 oz.  
*Misses' size 10, 12, 14, 16, 18*  
X31 K 4380—Yellow  
X31 K 4381—Light blue. . . . . \$7.84



1] A Border of Flowers richly em-  
broidered on a dramatic dress of  
checked gingham and black broadcloth.  
Set in dickey of linen-look rayon. Back  
has high scoop neckline-side zipper. Hand  
wash separately. *State size* Wt. 1 lb  
*Misses' sizes 8, 10, 12, 14, 16, 18*  
X31 K 6355—Black and white \$11.54

2] A Bouquet of Flowers embroidered  
on the front bodice, a detachable  
cummerbund and a big skirt add up to  
a pretty dress. Extra reinforced fabric  
belt. Side zipper. Little-iron broadcloth  
hand wash. Shpg. wt. 15 oz.  
*State Misses' size 12, 14, 16, 18, 20*  
X31 K 4382—Lilac  
X31 K 4383—Light petal green \$6.84

Dresses on these 2 pages shipped from  
Philadelphia, Chicago, Kansas City or  
Atlanta, whichever is nearest. Allow  
postage from your Mail Order House



cool fashion plan

# black and white

**1** Checked Gingham Panel sets off this deeply collared dress of fine cotton. Unpressed pleated skirt; long back zipper. Hand wash separately. Misses' sizes 12, 14, 16, 18, 20. *State size.* Shpg. wt. 1 lb. 4 oz. X31 K 5413—Black with black-and-white panel X31 K 5414—Mod. brown; brown-and-white panel. \$8.84

**1**

**3**  
Also in  
Half sizes

**2** Summer Brocade of cotton with an all-over, textured floral design. Shapely sheath comes with its own rhinestone pin. Soft V-neckline and zipper in back. Machine wash; needs little ironing. *Order correct size.* Misses' sizes 8, 10, 12, 14, 16, 18. Shipping weight 13 ounces. X31 K 4385—White.....\$6.84

**3** Airy Eyelet with a cut-out rayon flocked flower design. Skirt has smooth 3-gore back; side zipper. Unlined. Cotton . . hand wash separately. *State size.* Shipping weight 10 oz. Misses' sizes 12, 14, 16, 18, 20; *Half sizes* 14½, 16½, 18½, 20½, 22½. X31 K 4384—Black.....\$5.84

**4** Dots, Dots and More Dots adrift on cotton voile. Puff sleeves, big skirt; scooped neckline. Side zipper. Hand wash separately. Black and white necklace sold on page 15. Misses' sizes 12, 14, 16, 18, 20. *Half sizes* 14½, 16½, 18½, 20½, 22½, 24½. *Order correct size.* Shipping wt. 12 oz. X31 K 5407—Black with white dots X31 K 5408—Black; azure blue dots . \$8.84

**4**  
Also in  
Half sizes

Dresses on these 2 pages shipped from Philadelphia, Chicago, Kansas City or Atlanta, whichever is nearest. Allow postage from your mail order house. Measure . . see page 646.



# Cotton and Arnel

woven check fabric . .  
needs little ironing due to  
Arnel triacetate fibers



1

2



3

4



1 **Shirtwaist** in checks or solid. Full skirt of cluster pleats; roll-up sleeves; convertible collar. Step-in style. Hand wash separately; drip dry.  
Misses' sizes 12, 14, 16, 18, 20. Order correct size.  
Checked. Shpg. wt. 1 lb. 1 oz.  
X31 K 3498—Apricot checks  
X31 K 3499—Black and white checks. . . \$6.84  
Solid Color. Wt. 1 lb. 1 oz.  
X31 K 3495—Apricot  
X31 K 3496—Petal lilac (light) . . . . . \$6.84

2 **Suit-dress** . . mock pockets trim jacket. Side zipper in skirt. Hand wash alone, drip dry. *State size*  
Misses' sizes 12, 14, 16, 18, 20. Shpg. wt. 1 lb. 2 oz.  
X31 K 5405—Leaf (medium) green and white checks  
X31 K 5406—Black and white checks. . . \$8.84  
Tall Misses' 12T, 14T, 16T, 18T, 20T. Wt. 1 lb. 2 oz.  
X31 K 5425—Leaf (medium) green and white checks  
X31 K 5426—Black and white checks. . . \$9.84

3 **Jumper Dress** in oversized checks with a dobby weave. Step-in style; square neckline in back; unpressed pleated skirt. White blousette of fine cotton batiste. Hand wash separately; jumper needs only touch-up ironing.  
Misses' sizes 10, 12, 14, 16, 18. *State size*  
X31 K 6341—Black and white. Wt. 1 lb. 8 oz. . . \$10.84

4 **3-piece Outfit**: checked skirt and braid-bound, fully lined cardigan jacket . . plus a white sleeveless overblouse of pique-type cotton. Hand wash separately; suit drips dry, needs only touch-up ironing. *State size*  
Misses' sizes 12, 14, 16, 18, 20. Shipping wt. 1 lb. 8 oz.  
X31 K 6339—Taupe brown, white; beige lining  
X31 K 6340—Black and white; red lining. . . . . \$11.84

More easy-care fashions in Misses' and Tall sizes on page 66

it looks  
like linen

Plaid Dress of textured rayon and acetate with big button trim. Back zipper. Hand wash separately.

State Misses' size 12, 14, 16, 18, 20.

Shipping wt. 15 oz.

X31 K 3504—Medium brown and white

X31 K 3505 Medium shadow blue and white... \$6.84



**1** Embroidered Sheath of fine quality rayon with white all-over pattern. Back has square neckline with velvet bow, zipper. Hand wash alone. State Misses' size 10, 12, 14, 16, 18. X31 K 5423—Navy blue X31 K 5424—Lilac. Wt. 1 lb. .... \$9.54

MEASURE complete how-to-measure information and charts on page 646

For shipping information see page 7

26 SEARS

PERMANENT  
AND SLG



**2** Coat Dress of fine rayon. Looks very smart with white embroidered tassels and scallops down the front. Scooped neckline and sleeves have white binding. Hand wash separately. Wt. 1 lb. Misses' sizes 10, 12, 14, 16, 18. State size X31 K 5421—Medium moss green X31 K 5422—Navy blue... \$8.64

**3** Jacketed Dress in crisp rayon. The eased jacket is finely tucked and belted in front. The smart sheath dress has square neckline in back. Hand wash separately. State correct size. Misses' sizes 10, 12, 14, 16, 18, 20. X31 K 5656—Lt. beige jacket; med. brown dress X31 K 5657—Lt. blue jacket; navy blue dress. Shpg. wt. 1 lb. 9 oz. .... \$8.90 Tall Misses' sizes 12T, 14T, 16T, 18T, 20T. X31 K 5616—Lt. beige jacket; med. brown dress X31 K 5617—Lt. blue jacket; navy blue dress. Shpg. wt. 1 lb. 9 oz. .... \$9.84

For more dresses in Tall Misses' sizes see pages 2, 9, 25, 27, 28, 31, 32, 54, 62, 65



**3**  
Also  
Tall  
Misses





## Dacron<sup>®</sup> polyester batiste pleated to stay

**1 Dainty Scroll Embroidery** on bodice front. Side zipper. Hand wash alone, drip dry; wrinkle resistant. *State size*. Wt. 1 lb. 4 oz. *Misses' sizes* 10, 12, 14, 16, 18. X31 K 6332—Petal blue \$10.84. *Fall Misses' sizes* 12T, 14T, 16T, 18T. X31 K 6334—Petal blue. X31 K 6335—Pale beige. \$11.84

**2 Embroidered Flower Panels** on front and back of the eased bodice. Shirtwaist style with side zipper. Hand wash alone, drip dry; wrinkle resistant. *Misses' sizes* 12, 14, 16, 18, 20. *Half sizes* 14½, 16½, 18½, 20½. *State size*. Shpg. wt. 1 lb. 4 oz. X31 K 6330—Canary yellow. X31 K 6331—Lt. petal blue \$11.84

**3 Buttons, Bows and Fine Tucks** on a delightfully light and airy dress. Piping around jewel neck, line sleeves. Back of bodice is plain, with long zipper. Hand wash alone, or p. dry, wrinkle resistant. *State size*. Shpg. wt. 1 lb. 4 oz. *Misses' sizes* 8, 10, 12, 14, 16, 18. X31 K 6328—Petal green. X31 K 6329—Petal lilac \$11.84

**4 Breath of Spring Jewelry.** Gold color floral design with multi color stones and white enamel, hn. sh. 10% Federal exc. tax inc. Shpg. wt. each 3 oz. 4 K 3914E—Necklace adjusts 12½ to 15½ in. \$4.98. 4 K 3916E—Bracelet 7½ inch 3.50. 4 K 3915E—Earrings, clip back ¾ inch 2.00

**5 Four Penny Opera Pump.** Contrasting colored discs. Leather sole, 2¼-in. unbreakable heel. *Sizes* AA (narrow) width in 7, 7½, 8, 8½ and 9. B (medium) width in 5½, 6, 6½, 7, 7½ and 8. V54 K 6172—White calf. V54 K 6175—Bone calf. *State size, width*. Shpg. wt. 1 lb. 9 oz. \$10.70



# CREPE

*subtly shaped and  
elegant in black*

Deep Tuxedo Collar filled in with tucked organdy dickey (detachable). In a semi-sheer, rib-textured acetate and rayon. Lined from waist to hips. Bow-trimmed belt of rayon satin buckles in back; back zipper. Dry clean.

Misses' sizes 12, 14, 16, 18, 20.

State size. Shpg. wt. 1 lb. 8 oz.

X 31 K 6318—Black

X 31 K 6319—Navy blue. \$10.84



Slim and Moulded and a neckline that adapts to a variety of jewelry. Intricate bias darts shape the bustline; lining from waist to hips. Back zipper. Finely ribbed fabric of acetate and rayon. Dry clean. Pendant sold on pg. 91. Wt. 1 lb. 4 oz. Misses' sizes 12, 14, 16, 18, 20. State correct size.

X 31 K 5415—Black

X 31 K 5416—Navy \$8.84

Tall Misses' 12T, 14T, 16T, 18T, 20T State size.

X 31 K 5435—Black

X 31 K 5456—Navy. \$9.54



Tiers of Tucks go all around this slender-looking dress. In a semi-sheer and finely ribbed fabric of rayon and acetate for year 'round wear. Lined from waist to hips, shallow scoop neckline and zipper in back. Ornament. Dry clean.

Misses' sizes 12, 14, 16, 18, 20.

State size. Shpg. wt. 1 lb. 3 oz.

V 31 K 7102—Black

V 31 K 7103—Navy..... \$13.84



Wide Collar, Full Skirt underscore this adaptable dress. In a year 'round, semi-sheer acetate and rayon fabric that has a fine rib. Step-in style, unpressed pleated skirt. Pin included. Dry clean. Hat sold on page 4. Misses' sizes 12, 14, 16, 18, 20. Order correct size. Shpg. wt. 1 lb. 9 oz. V 31 K 7100—Black

V 31 K 7101—Navy \$12.84



# LACE

*dramatizes  
a shirtwaist*

This classic style extends its influence to the evening hours. Elegant in rich re-embroidered cotton lace over acetate taffeta. Step-in style; full unpressed pleated skirt. Dry clean. Wt. 2 lbs. Misses' sizes 10, 12, 14, 16, 18. State size. V31 K 7761-Red V31 K 7760-Ivory white V31 K 7762-Lt blue \$16.50

# EYELET

*cotton in rich dark tones*

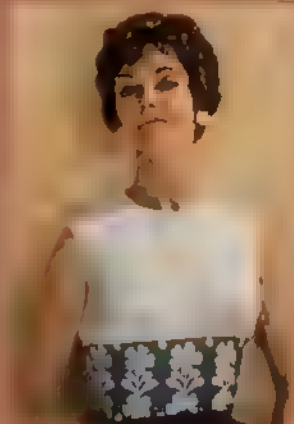
Embroidered Edging, dyed-to-match, trims collar and bodice of this dainty shirtwaist. The fabric is an all-over embroidered batiste, fully lined in cotton. Step-in style; unpressed pleated skirt. Hand wash separately. Misses' sizes 10, 12, 14, 16, 18. State size. Shpg. wt. 1 lb. 9 oz. V31 K 7850-Brown V31 K 7851-Black..... \$17.84

Dramatic Collar cuts a wide swath above a narrow sheath. In a lightweight, all-over embroidered fabric, fully lined with acetate taffeta. Rayon velvet streamers; glitter pin. Back zipper. Dry clean. Misses' sizes 12, 14, 16, 18, 20. Half sizes 12½, 14½, 16½, 18½, 20½, 22½. Order correct size. Shipping wt. 1 lb. 3 oz. V31 K 7118-Black..... \$12.84

Catalog numbers on these two pages beginning with "V" shipped from Philadelphia or Chicago, whichever is nearest; others with "K" shipped from Philadelphia, Chicago, Kansas City or Atlanta. Allow postage from your mail order house. Measure . . . see page 646.

*"Change It" if you wish . . . see inside front cover*

Enamelled Jewelry with beads. State white with gold color or pink with silver color. 10% Federal Excise Tax incl. Wt. ea. 3 oz. 4 K 3900E-Necklace adjusts to 16 inches 4 K 3901E-Clip Earrings, 1¼ in. 4 K 3902E-Bracelet, 7¼ in. \$2.98 each



**Emphasis on Ease** . . free swinging, braid bound jacket over a slim dress. Step-in style with concealed closing, detachable dickey. Textured fabric of Arnel triacetate and cotton. Dry clean. Hat sold in hat section.

*Misses' sizes 12, 14, 16, 18, 20. State size.*

V31 K 7890—Black and white woven plaid

Shpg. wt. 2 lbs. . . \$15.84

*Half sizes 14½, 16½, 18½, 20½, 22½. State size.*

V31 K 7925—Black and white woven plaid

Shpg. wt. 2 lbs. . . \$16.84

**Sheer Embroidered Band** goes around the bodice of this slim dress. Over it, a brief jacket. In linen-look rayon . . wrinkle resistant; hand wash separately. Long back zipper in dress. Hat sold on page 2.

*Misses' sizes 12, 14, 16, 18. State size.*

Shpg. wt. 1 lb. 10 oz.

X31 K 5409—Black

X31 K 5410—

Peacock blue, . . . \$9.84

Numbers on these 2 pages beginning with "Y" shipped from Philadelphia or Chicago, with "X" from Philadelphia, Chicago, Kansas City or Atlanta; whichever is nearest. Allow postage from mail order house.



# jacket dresses

**Coin Dotted.** Brief jacket and smart sheath in shantung-textured cotton and Cupioni® rayon. Dress bodice finely pleated in front, back zipper. Lined jacket. Hand wash alone. Jewelry sold on page 13. Misses' sizes 10, 12, 14, 16, 18. Order correct size. Shpg. wt. 1 lb. 1 oz. V31 K 7104 -Black and white with black coin dots.....\$12.84

**Big Collared jacket** over a slim, scoop-necked dress. In a shantung-look blend of pima cotton and Cupioni rayon. Dress lined to hips, back zipper. Separate cummerbund of two-tone dots on white. Hand wash separately. Order correct size. Shpg. wt. 1 lb. 8 oz. Misses' sizes 10, 12, 14, 16, 18 X31 K 6320 -Navy blue X31 K 6321 -Spice tan...\$11.84 Tall Misses' 12T, 14T, 16T, 18T. X31 K 6322 -Navy blue X31 K 6323 -Spice tan... \$12.84

**Lavish Embroidery.** Eased, button-back jacket and dress in a crisp, linen-look rayon fabric. Neckline of dress scooped low in back. zipper. Hand wash separately. Hat sold on page 15 Order correct size Misses' sizes 10, 12, 14, 16, 18. Shipping wt. 2 lbs. X31 K 6324 -Light spice brown with ivory X31 K 6325 -Navy blue with white...\$10.54

Also  
Tall  
Misses

# Take it



1

2

**1** Shirtwaist Dress in a nylon and Dacron<sup>®</sup> polyester fabric. Step-in style. Hand wash separately . . . drip dry. *State size* Misses' sizes 12, 14, 16, 18, 20; *Half sizes* 12½, 14½, 16½, 18½, 20½, 22½. Shipping wt. 1 lb. 4 oz. X31K 6342—Navy blue and white stripes X31K 6343—Black and white. . . . \$10.84

**2** Classic Dress in Arnel triacetate jersey. Elasticized waist. Hand wash separately . . . drip dry. Shpg. wt. 13 oz. *State size* Misses' sizes 12, 14, 16, 18, 20; *Half sizes* 14½, 16½, 18½, 20½, 22½, 24½. X31K 3431—Deep violet, black and white print X31K 3432—Azure (lt.) blue; black and white print. . . . \$6.54

**3** Big Collar Dress . . detachable collar. Square neckline and zipper in back Arnel triacetate fabric with a leno weave. Hand wash alone . . . drip dry. Shpg. wt. 1 lb. 6 oz. Misses' sizes 12, 14, 16, 18, 20. *State size* V31K 7112—Light beige V31K 7113—Light blue. . . . \$12.84 *Tall Misses'* 12T, 14T, 16T, 18T, 20T. *State size* V31K 7125—Light beige V31K 7126—Light blue. . . . \$13.84

**4** Pleated Dress in Arnel triacetate. Tucked bodice in front; higher neckline in back; elasticized waist. Hand wash separately . . . drip dry . . . the pleats will stay in. Misses' sizes 8, 10, 12, 14, 16, 18. *Order correct size.* Shipping weight 1 lb. X31K 3501—White; navy belt with white dots. X31K 3502—Beige; white belt with beige dots. X31K 3503—Pale blue, navy blue belt with white dots. . . \$7.84

3

4

MEASURE . . . see page 646 *More Tall Misses' dresses on pages 7, 9, 25, 26, 27, 28, 31, 54, 62, 65*



# Easy

in little-iron JERSEY



**Sleeveless Dress** in Arnel triacetate and nylon . . looks like ribbon knit. Side zipper. Hand wash separately . . drip dry. Shipping wt. 1 lb. 3 oz. *Misses' sizes* 12, 14, 16, 18, 20. *State correct size.*  
**V31 K 7110—Beige \$13.54**  
**V31 K 7111—Navy blue \$14.54**  
*Half sizes* 14½, 16½, 18½, 20½, 22½, 24½. *State size.*  
**V31 K 7530—Beige \$13.54**  
**V31 K 7531—Navy blue \$14.54**

**Step-in Dress.** Zip front, multi-gored skirt. Arnel triacetate . . machine wash, drip dry. *Half sizes* 16½, 18½, 20½, 22½, 24½. *State size.*  
**X31 K 5839—Navy; white dots \$13.54**  
**X31 K 5840—Slate gray; white dots. Wt. 14 oz. \$8.84**  
*Larger Women's sizes* 46, 48, 50, 52. *State size.* Wt. 14 oz.  
**X31 K 5841—Navy; white dots \$13.54**  
**X31 K 5842—Slate gray; white dots. \$9.84**

**Multi-gored Coot Dress** in cool acetate-and-nylon mesh. Fabric loops around collar, down the front. Hand wash separately, drip dry. *State size.*  
*Half sizes* 14½, 16½, 18½, 20½, 22½, 24½, *Women's sizes* 38, 40, 42, 44.  
**X31 K 6660—Powder blue \$13.54**  
**X31 K 6661—Powder rose \$13.54**  
**X31 K 6662—Navy \$10.84**  
 Wt. 1 lb. 8 oz. . .

← **Jacketed Dress** (at left) in a handsome print of Arnel triacetate. Brief, deep-collared jacket. Dress has high square neckline in back; side zipper. Nylon velvet trim; ornament included. Hand wash separately. Shpg. wt. 1 lb. 3 oz. *State size.*  
*Misses' sizes* 10, 12, 14, 16, 18.  
**V31 K 7108—Black and white. \$13.84**  
*Half sizes* 14½, 16½, 18½, 20½, 22½.  
**V31 K 7520—Black and white print. \$14.84**



Catalog Nos. on these two pages beginning with "V" shipped from Philadelphia or Chicago, whichever is nearer. Catalog Nos. beginning with "X" shipped from Philadelphia, Chicago, Kansas City or Atlanta, whichever is nearest. Allow postage from your Sears Mail Order House.

# the young look



**Big Lantern Sleeves**, braceleted with wide cuffs of white pique add drama to this French inspired fashion. Coat style of woven check cotton, 3-inch hem. Hand wash. Shoes sold on page 27.

Junior sizes 5, 7, 9, 11, 13, 15.  
State size. Shpg. wt. 1 lb.

X 31 K 6180—Pink and white  
X 31 K 6181—Open blue and white

\$10.84

Catalog numbers on these 2 pages beginning with "V" shipped from Philadelphia or Chicago; with "X" from Philadelphia, Chicago, Kansas City or Atlanta. Allow postage from Mail Order House.

**Ruffles cuff and hem** this charming dress. Step-in style of cotton broadcloth with flower strewn geometric pattern on a white ground. Lined skirt. Hand wash separately. Order correct size. Shpg. wt. 2 lbs.

Junior sizes 5, 7, 9, 11, 13.

V 31 K 7625—Lavender

V 31 K 7626—Lt. blue

V 31 K 7627—Pink . . . \$15.84

**The Hat:** raffia straw sailor with cotton ties. Fits 21½ to 22½ in. Shpg. weight 1 lb. 1 oz. State color light pink, parakeet (aqua) blue, white or yellow.

V 78 K 1850 . . . \$4.97



as seen in Paris



New miniatures . . . mock monogram jewelry with slave link chain. State gold or silver color.  
4 K 3793E—Pendant.  
16 in. Wt. 2 oz. . . \$1.00  
4K3794E—Bracelet.  
7½ in. Wt. 2 oz. . . \$1.00  
10% Fed. Exc. Tax incl.

**Big Collar, Deep Cuffs** and a wide belt . . . fashionable dimensions on a shirtwaist of striped cotton sateen. Step-in style with surplice bodice and full skirt of cluster pleats. Hand wash separately.  
*Junior sizes 7, 9, 11, 13, 15. Order correct size.*  
V31 K 7060—Light open blue and white  
V31 K 7061—Light green and white  
Wt. 2 lbs. 1 oz. . . \$14.54

**Bow Tote Bag.** Crocheted straw-like toyo. Simulated pearl trim. Rayon lined. About 9x8 in. Shpg. wt. 1 lb. 12 oz.  
88 K 1179E—White  
88 K 1180E—  
Natural tan . . . \$5.97  
10% Fed. Exc. Tax incl.

**Accents of Woven Check** gingham on fine quality cotton broadcloth. White petticoat with checked band. Back of dress has low scooped neckline, zipper, waistline seam, unpressed skirt pleats. Machine wash. Shoes sold on page 5.  
*State Junior size 7, 9, 11, 13, 15. Shpg. wt. 1 lb. 1 oz.*  
X 31 K 4266—Maize  
X 31 K 4266—Parakeet (med.) blue . . . \$8.54

**Double Fabric Nylon Hood** . . . pretty hair-do protector. Hand wash alone. Wt. 2 oz.  
88 K 8837—Yellow  
88 K 8838—Beige  
88 K 8839—Pink . . . \$1.97

# gay as the party



4

**1** Airy Eyelet jacket-dress of nylon and rayon. Full skirted dress has mock button-front bodice with scooped neckline and back zipper. Crushed cummerbund and lining of cotton broadcloth. Brief jacket has bow at front closing. Hand wash separately.

Junior sizes 7, 9, 11, 13, 15, 17. *State correct size.*

V31 K 7033—Canary yellow

V31 K 7034—Lt. blue. Shpg. wt. 1 lb. 4 oz. . . \$13.84

**2** Festive Cotton Lace . . balloon-sleeved, bouffant-skirted. Acetate satin trim around midriff and elasticized sleeves. Low neckline and zipper in back. Acetate taffeta lining; nylon net petticoat. Dry clean. *State Junior size 5, 7, 9, 11, 13, 15. Shpg. wt. 3 lbs.*

V31 K 7630—Flamingo pink

V31 K 7631—Light sky blue

V31 K 7632—White. . . . . \$18.54

**3** Filmy Nylon Sheer floats over acetate taffeta lining. Midriff has re-embroidered lace and ribbon beading. V-neckline and zipper in back. Dry clean. *Junior sizes 5, 7, 9, 11, 13, 15. *State correct size.**

V31 K 7633—Parakeet blue

V31 K 7634—Canary yellow

V31 K 7638—White. Shpg. wt. 1 lb. 12 oz. . . \$14.54

**4** Gay Floral Jewelry with rich pearlized finish on gold color metal. Necklace adjusts to 15 in.; 1½-in. earrings, clip back, 10% fed. ex. tax incl. *State yellow, blue or pink color.*

4 K 3911E—Necklace, earrings. Wt. 4 oz. . . \$4.50

4 K 3912E—Bracelet. 7½ in. Wt. 2 oz. . . . . 2.50



1

2

3

For more  
Junior party dresses  
see pages 9 and 10



# Embroidery

is a pretty  
detail

**1** White Accents of cutout embroidery grace the bodice front and sleeves of this cotton broadcloth shirt-waist. Side zipper. Washable. Bag sold on page 35.

Junior sizes 7, 9, 11, 13, 15. State size. Shpg. wt. 11 oz.

X31 K 4260—Pink

X31 K 4261—Light blue

. \$6.84

**2** Days of the Week are embroidered and appliqued on a slim dress of linen-look rayon. Skirt is softly pleated at front waist. Side zipper. Hand wash alone.

State Junior size 7, 9, 11, 13, 15. Shpg. wt. 1 lb.

X31 K 5094—Pastel blue

X31 K 5095—Rose-pink... \$9.54



**3**

**3** Color-matched embroidery on the sleeves and back of bodice. Step-in shirtwaist with cummerbund sash. Washable Arnel triacetate and cotton broadcloth.

State Junior size 7, 9, 11, 13, 15. Shpg. wt. 15 oz.

X31 K 3140—Canary yellow

X31 K 3141—Petal lilac... \$7.84

**4** Delicate Bouquets so beautifully embroidered they look like fine hand work. The fabric is sheer cotton batiste. Deep hem; back zipper. Hand wash separately.

State Junior size 5, 7, 9, 11, 13, 15. Shpg. wt. 13 oz.

V31 K 7050—Petal lilac

V31 K 7051—Petal pink... \$13.84

Rayon Velvet Headband, at right. State canary yellow, flamingo pink, parakeet (aqua) blue, black.

88 K 8828—Fit all. Shpg. wt. 3 oz. .... any 2 for \$1.97

Nylon Shorty Gloves, at right. Elastic wrist. Helanca® stretch yarn panels. . . fit sizes 6 to 8. Machine wash.

88 K 5458—Canary yellow 88 K 5459—Flamingo pink

88 K 5456—White 88 K 5457—L.L. beige

88 K 5460—Parakeet (aqua) blue. Shpg. wt. 3 oz. \$1.97.

Numbers on these 2 pages beginning with "V" shipped from Philadelphia or Chicago, whichever is nearer; with "X" from Philadelphia, Chicago, Kansas City or Atlanta, whichever is nearest; others from mail order house. Allow postage from mail order house.

POURING  
ANDSLE SEARS 37



**The Bouffant Dress and its Bolero** in a lustrous cotton-and silk woven plaid. The bolero has a double-breasted effect. The dress has a solid-color bodice with a moderately scooped neckline, long zipper in back. Dry clean. Shpg. wt. 1 lb. Junior sizes 7, 9, 11, 13, 15. Order correct size.  
 V31 K 7075—Parakeet blue and white plaid with blue bodice  
 V31 K 7076—Black and white plaid with black bodice.....\$13.84

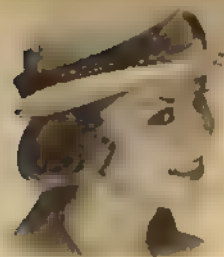
**Handbag.** Leather-like plastic, rayon-lined. Center zip pocket in side. About 7x9 inches. 10% Fed Exc. Tax included. Wt. 1 lb. 12 oz.  
 88 K 1091E—Red  
 88 K 1092E—Black  
 88 K 1090E—Medium gray \$3.57  
**Little Heel Pump.** Sleek smooth leather. 1 3/4-inch heel, leather sole  
 Sizes: AA (narrow) 7, 7 1/2, 8, 8 1/2, 9  
 B (medium) width 5 to 9.  
 Half sizes too. State size, width.  
 V54 K 8142—Red V54 K 8143—Gray  
 Shpg. wt. 1 lb. 6 oz.....\$6.77

**The Plaid Suit with its own Blouse.** Woven cotton-and-silk suit . . fitted white overblouse of linen-look rayon. Hip-length cardigan jacket is lined with acetate taffeta. Slim skirt has walking slits. Dry clean suit, hand wash blouse. Shpg. wt. 2 lbs. Junior sizes 7, 9, 11, 13, 15. Order correct size  
 V31 K 7640—Gray, black and white plaid  
 V31 K 7641—Red, gray and black plaid \$15.84  
 Measure . . see page 646





# Partnerships..



**Derby Straw Hat** with gros-grain band, rayon veil. Fits 21 3/4 to 22 3/4 in. *State color* white with black, lt. beige with med. brown; or *solid* red, navy, black. Shipping wt. 13 oz.  
V 78 K 1825.....\$4.97



**A Sheath and its Jacket** in linen-look fabric of rayon and Dacron® polyester. Fitted jacket is cropped short. Back of dress has moderately scooped neckline, long zipper. Hand wash separately... needs little ironing. *State size.*  
Junior sizes 5, 7, 9, 11, 13, 15. Wt. 1 lb. 12 oz.  
X31 K 6185—Navy blue  
X31 K 6186—Light violet  
X31 K 6187—Light leaf green... \$10.84

**The Dress with a Sweater.** Broadcloth dress of Arnel triacetate and cotton has lace and fine tucks around camisole bodice; back zipper. Knit cardigan of Orlon® acrylic; detachable collar trimmed with tucks, lace. Hand wash separately.  
Junior sizes 7, 9, 11, 13, 15, 17. *Order correct size.*  
V31 K 7080—Canary yellow  
V31 K 7082—Petal (light) blue.  
V31 K 7081—Light pink. Wt. 1 lb. 8 oz... \$14.84

**Two Tops and a Skirt** that's pleated in front. Solid color skirt and blouse of nubby-textured linen-look rayon and silk. Checked blouse of Arnel triacetate, rayon, cotton. Hand wash separately.  
Junior sizes 7, 9, 11, 13, 15. *Order correct size.*  
X31 K 6183—Medium fawn brown; fawn brown and white checks  
X31 K 6184—Lt. copen blue with lt. copen blue and white checks  
Shipping weight 1 pound 12 ounces... \$11.54

Numbers on these 2 pages beginning with "V31" and "V78" shipped from Philadelphia or Chicago, with "X31" from Philadelphia, Chicago, Kansas City or Atlanta; with "V54" from Chicago, Ill. or Philadelphia, Pa. Allow postage from mail order house.

**1** Wide Wale Fabric with corded effect. Button-trimmed sheath; white silk square; back zipper. Machine wash. Junior size 5, 7, 9, 11, 13, 15. State size X31 K 4263—Leaf green X31 K 4264—Red Shpg. wt. 15 oz. **\$5.84**

**2** Printed Stripes cinched with tyrolean-type midriff. Back has scooped neckline zipper. Machine wash. Junior size 5, 7, 9, 11, 13, 15. State size X31 K 4262—Multicolor stripes Shpg. wt. 12 oz. **\$6.84**

# COTTONS

**3** Fine Broadcloth coat dress with white rick-rack edging and pearl white buttons. Machine wash. State Junior size 7, 9, 11, 13, 15, 17. Shpg. wt. 14 oz. X31 K 4254—Light turquoise blue X31 K 4255—Navy blue **\$5.84**

**4** Woven Plaid. Split collar and wide tucks on bodice. Skirt with unpressed double pleats. Side zipper. Hand wash separately. Shpg. wt. 15 oz. State Junior size 7, 9, 11, 13, 15. X31 K 5104—Rose and shadow green X31 K 5105—Parakeet blue and green. **\$8.84**

**5** Bandanna Print. Large brass safety pin on cummerbund-effect midriff. Back has V-neckline, zipper. Hand wash separately. Wt. 1 lb. 2 oz. State Junior size 7, 9, 11, 13, 15. X31 K 5096—Rose red with royal blue and dark green. **\$8.84**





**1** Woven Checks wrapped at waist with white organdy. Midriff piped in checks, rosette trim. Lined bodice. Deep V. Back zipper. Machine wash. Wrinkle-resistant cotton. *State size Junior sizes 7, 9, 11, 13, 15. Machine wash. \$6.84*  
 X31 K 4252 Pink and white  
 X31 K 4253 Parakeet blue and white

**2** Pretty Pastel dress has a dainty tucked-front bodice with lace beading around the bateau neckline and waist. Bows on shoulders and at back waist. Back zipper. Wrinkle-resistant cotton. Machine wash. *State size Junior sizes 7, 9, 11, 13, 15. Machine wash. \$7.84*  
 X31 K 4246 Light aqua blue  
 X31 K 4247 Yellow

**3** Foulard Print shirtwaist in cotton sateen with deeper toned rayon chiffon scarf and grosgrain belt. Side zipper. Machine wash. *Wt. 15 oz. State Junior size 7, 9, 11, 13, 15. \$7.54*  
 X31 K 4258 Violet on lilac  
 X31 K 4259 Deep gold on ivory

**4** Snowy Dots on Everglaze cotton. Dress details: bows, rosettes, white pique binding. Back zipper. Wrinkle-resistant hand wash alone. *State size Junior sizes 7, 9, 11, 13, 15. Machine wash. \$8.94*  
 X31 K 5098 Mint green  
 X31 K 5099 Geranium pink

**Scrab Jewelry Set** Rhinestone earrings with rhinestone center back. 14K gold color metal. 10% Federal Excise Tax included.  
**4 K 3935E—Wt. 2 oz \$2.00**

**Roller Hat** Foulard print cotton sateen matches dress 3 above. *State color violet on lilac, or gold on ivory. 22 to 22½ inches. Shpg. wt. 13 oz. \$2.97*  
 V78 K 1800

**Strawcloth Satchel** Rayon lined. About 10x7 in. 10% Fed. Excise Tax included. Shpg. wt. 1 lb 8 oz.  
 88 K 1143E White  
 88 K 1144E Black. \$5.97



Just say "Change it" and pay later... see inside front cover

Dresses on these 2 pages shipped from Philadelphia, Chicago, Kansas City or Atlanta. Hat shipped from Philadelphia or Chicago. Others from your M. O. house. Allow postage from your M. O. house.

Gold color Bracelet with assorted stones on 5 large charms: gondolier, soda fountain, heart, palette and ballerinas. Wt. 2 oz. 4 K 3919C—7¼-inch double link chain. 10% federal excise tax incl. . \$2.00

① Lace-traced neckline, shoulder bow ties, and tucked-front bodice. Pretty dress of little-iron 65% Dacron® polyester and 35% cotton. Side zipper. Machine washable. Junior sizes 7, 9, 11, 13, 15. State size. X 31 K 5168—Black X 31 K 5169—Light blue X 31 K 5170—Light green. Wt. 1 lb. . \$8.94

② Pastel Stripes woven of Chromapun acetate on cotton. Step-in style. Hand wash. Copen blue belt on white and light blue; brown on ivory beige. Wt. 1 lb. 1 oz. Junior sizes 7, 9, 11, 13, 15. State size. X 31 K 3146—White ground X 31 K 3148—Light blue ground X 31 K 3147—Ivory beige ground.... \$5.84



.. it's cooler  
without sleeves



③ White Panel of broadcloth, trellised with embroidered flowers on a woven check gingham dress. Scoop neckline and zipper in back. Wrinkle-resistant cotton . . hand wash separately. State Junior size 7, 9, 11, 13, 15, 17. Shpg. wt. 15 oz. X 31 K 5092—Black and white X 31 K 5093—Pink and white.....\$8.84



④ Red and White Bands wrap a slim dress of pique-textured cotton. Back has scoop neckline and zipper. Bands are removable, button in back. Machine washable. Shpg. wt. 11 oz. Junior sizes 7, 9, 11, 13, 15. State correct size. X 31 K 4248—Black. . \$5.84

MEASURE . .  
see chart on page 646

Dresses on these 2 pages shipped from Philadelphia, Chicago, Kansas City or Atlanta; jewelry from mail order house. Allow postage from mail order house.



# black and white

*a summer classic*



Jet bead jewelry. 3-row necklace and  $\frac{3}{4}$  in. clip back earrings.

4 K 3920E—Set. Wt. 3 oz. . \$2.00

4 K 3921E—Bracelet. Wt. 2 oz. 1.00

10% federal excise tax included.



**1** Nautical Dress of woven plaid cotton and Arnel triacetate. White linen-look rayon collar; bib in set; detachable sailor tie. Back zipper. Hand washable.  
Junior sizes 7, 9, 11, 13, 15. *State size*  
X31 K 3143—Black and white  
X31 K 3144—Parakeet blue and white  
X31 K 3145—Medium green, white  
Wt. 14 oz. \$6.84

**2** Jacketed Dress strikes a smart contrast in woven checks and solid color. Full-skirted gingham dress with scoop neckline and back zipper. Side-buttoned broadcloth jacket piped in checks. Machine washable cotton.  
Junior sizes 7, 9, 11, 13, 15. *State size*  
Shipping weight 11 oz.  
X31 K 4256—Black and white checks with black.... \$5.84

**3** Bare-arm Dress of embossed cotton has checkerboard border print. Pretty touches include oversized bow and panel of cotton lace beaded with rayon velvet ribbon. Lined bodice; back zipper. Hand wash.  
Junior sizes 5, 7, 9, 11, 13, 15. *State size*  
X31 K 4250—Black print on white  
X31 K 4251—Red print on white  
Wt. 12 oz. .... \$6.84

**4** Midriff Dress with white piping. Back of dress has tiny bows, scoop neckline, zipper. Fine cotton broadcloth. Hand wash separately. Shpg. wt. 1 lb.  
Junior sizes 7, 9, 11, 13, 15. *State size*.  
X31 K 5102—Black X31 K 5103—Red... \$8.84

*No payments until later when you "Change it" . . . see inside front cover*

# Fashions in Half Sizes designed

## [1] The Chiffon Dress of fine

material

Yoke and curved in  
verts of dyed to match nylon

Half sizes 14½, 16½, 18½

Color 12, 14, 16, 18, 20

V31 K 7937 Navy 12

V31 K 7938 Navy 14

Dark blue \$19.84

Color Ensemble... beautiful

aculate and nylon over

ress has rhinestone orna

Open jacket is scalloped

around Dry clean shipg

Half sizes 14½, 16½, 18½

V31 K 7936—Dusty blue

V31 K 7938—Navy

Color





with youthful lines



**Blouson Cloche Hat**  
of sewn straw braid.  
Rayon velvet band,  
jewel-look ornament.  
Fits 21½ to 22½ in.  
Please be sure to state  
color white, light beige,  
navy or black. Ship-  
ping weight 15 ounces.  
V78 K 1860 . . \$3.97

**1** Draped Bodice Dress of acetate-and-nylon lace over acetate taffeta. Skirt is tucked and gored. Pin included. Dry clean. Wt. 2 lbs. Half sizes 14½, 16½, 18½, 20½, 22½, 24½. State size. V31 K 7922—Dusty rose V31 K 7921—Powder blue V31 K 7923—Navy blue V31 K 7920—Gray over pink. . . . . \$15.84

**2** Twin-Print Dress of filmy nylon chiffon over acetate taffeta, both fabrics printed in a floral pattern. Side zipper. Dry clean. Half sizes 14½, 16½, 18½, 20½, 22½, 24½. Women's sizes 38, 40, 42, 44. State size. Shpg. wt. 1 lb. 4 oz. X31 K 6658—Leaf green X31 K 6659—Azure blue on white. . . . . \$11.54

**3** Tucked Sheer in cool and carefree Dacron® batiste of polyester fibers. Bodice is tucked in front; back zipper. Hand wash separately, drip dry, little ironing needed. Shpg. wt. 11 oz. Half sizes 14½, 16½, 18½, 20½, 22½, 24½. State size. V31 K 7532—Petal lavender V31 K 7533—Light pink . . . \$13.84

Items on these 2 pages beginning with "V" shipped from Philadelphia or Chicago; others from Philadelphia, Chicago, Kansas City or Atlanta, whichever is nearest. Allow postage from mail order house.

**4** Dress and Jacket in easy-care Dacron polyester batiste with rayon velvet trim. Wrinkle-resistant . . hand wash separately, drip dry; pleats stay. A smart travel outfit. Side zipper. Belt included. Shipping weight 1 lb. 8 oz. Half sizes 12½, 14½, 16½, 18½, 20½, 22½. State size. V31 K 7930—Spice brown print V31 K 7931—Bright blue print. . . . . \$15.84

MEASURE . . see page 646. Other Half size dresses on pages 16, 17, 22, 23, 24, 27, 29, 32, 33

the indispensable



Also  
Women's  
sizes

Also  
larger  
Women's sizes

**Becoming Shirtwaist** in a finely ribbed acetate that has a subtle luster. Wide, graceful multi-gored skirt. Shoulder flanges; side zipper. Hand wash separately. *Half sizes* 14½, 16½, 18½, 20½, 22½, 24½; *Women's sizes* 38, 40, 42, 44. *State size* X31 K 3725—Black and gray print on white ground X31 K 3726—Peacock, white on peacock blue Shpg. wt. 12 oz. . . . \$6.84

**Tucked-front Fashion** in rib-textured acetate and rayon. Rippling multi-gored skirt. Shoulder flanges; side zipper. Dry clean. *State size*. Shpg. wt. 15 oz. *Half sizes* 12½, 14½, 16½, 18½, 20½, 22½, 24½. X31 K 3728—Navy X31 K 3729—Black . . . \$6.84 *Larger Women's sizes* 46, 48, 50, 52 X31 K 3730—Navy X31 K 3731—Black . . . \$7.54

Catalog numbers on these 2 pages beginning with "X" shipped from Philadelphia, Chicago, Kansas City or Atlanta; others beginning with "V" shipped from Philadelphia or Chicago. Allow postage from your Sears Mail Order House.

**1 Partnership in Print:** dress and jacket ensemble in a beautiful, lustrous acetate fabric that has a pebbly texture. Slim dress is detailed at neckline with inset of fine pleats; side zipper. Brief jacket has two glitter ornaments and white fluting on collar. Dry clean. Shipping weight 1 lb. 8 oz. *Half sizes* 14½, 16½, 18½, 20½, 22½. *State size*. X31 K 6666—Peacock blue and brown print X31 K 6667—Violet and turquoise print . . . \$10.84



Also  
Women's  
sizes

**2 Handsome Ensemble** in a semi-sheer, finely ribbed fabric of acetate and rayon. Dress has a touch of white at the neckline with two glitter ornaments, multi-gored skirt; side zipper. White detachable overcollar on jacket. Dry clean. Wt. 1 lb. 8 oz. *Half sizes* 14½, 16½, 18½, 20½, 22½, 24½; *Women's sizes* 38, 40, 42, 44. *State size*. V31 K 7538—Navy V31 K 7539—Black . . . \$13.84



# Crepe Dress

**1** Draped Bodice, flared skirt in a masterful line of design that subtly flatters your figure. Lustrous, pebbly textured acetate fabric. Side zipper. Rhinestone ornament included. Dry clean. *State size.*  
*Half sizes 14½, 16½, 18½, 20½, 22½, 24½. Shpg. wt. 12 oz.*  
 X31 K 5827—Bright green, med. blue and violet floral print.....\$8.84



Also Women's sizes

Also Tall Women's sizes

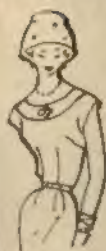
Coachman Fashion in lustrous, pebbly textured acetate. Skirt is softly pleated in front, smooth 3-gore back; side zipper. Dry clean. Shipping weight 10 oz.  
*Half sizes 14½, 16½, 18½, 20½, 22½, 24½. State size.*  
 X31 K 3723—Navy with white dots.....\$6.84  
*Tall Women's sizes 38T, 40T, 42T, 44T. State size.*  
 X31 K 3724—Navy with white dots.....\$7.54

Criss-cross Draping and a rhinestone ornament on the bodice of this dress in rib-textured acetate and rayon. Skirt is softly full yet manages to achieve a slim line. Back zipper. Dry clean. *State size.*  
*Half sizes 14½, 16½, 18½, 20½, 22½, 24½. Women's sizes 38, 40, 42, 44. Shpg. wt. 1 lb. 10 oz.*  
 X31 K 5828—Black  
 X31 K 5829—Navy...\$8.84

**2** Trim, Tailored Look of this dress is set off by deep white cuffs. Finely ribbed fabric of acetate and rayon. Set-in waistband in front; multigored skirt; side zipper. Detachable cuffs. Dry clean.  
*Half sizes 14½, 16½, 18½, 20½, 22½. State size.*  
 X31 K 6668—Navy blue X31 K 6669—Black  
 Shipping weight 1 lb. 8 oz.....\$10.84

Measure to Be Sure... see page 646





1 Also Tall Women's sizes



4



2

3

## The Faille Outfit

1 Eased jacket, slim dress in fine-rib acetate and rayon. Dress has short sleeves, banded scoop neck; back zipper. Dry clean. *State size.* Wt. 1 lb. 12 oz. *Half sizes* 14½, 16½, 18½, 20½, 22½, 24½. V31 K 7534-Navy V31 K 7535-Black \$13.84 *Tall Women's\* sizes* 38T, 40T, 42T, 44T. V31 K 7536-Navy V31 K 7537-Black \$14.84

2 Dressmaker look in a finely ribbed fabric of acetate and rayon. The jacket is distinctively detailed with a deep shoulder yoke of fine pin tucks, front and back. Slim skirt; side zipper. Dry clean. Hat shown sold in millinery section. *State size.* *Half sizes* 14½, 16½, 18½, 20½, 22½. Wt. 1 lb. 8 oz. X31 K 6670-Navy X31 K 6671-Black \$11.54

3 Handsome belted fashion of finely ribbed acetate and rayon. Trim-fitting jacket is set aglitter with rhinestone-centered buttons; belt loops front and back. Slim skirt; side zipper. Dry clean. *Half sizes* 14½, 16½, 18½, 20½, 22½, 24½. *Order correct size.* Shpg. wt. 1 lb. 1 oz. X31 K 3732-Navy X31 K 3733-Black \$6.84

4 The Jewelry. Contrasting bright lustre and satin finish fresh-water simulated white pearls. Smart with black or navy. 10% fed. exc. tax incl. 4 K 3880E-4-row necklace adjusts from 14½ to 16½ in. Wt. 10 oz. \$3.98 4 K 3882E-3-row bracelet with dangles. 7½ inches. Shpg. wt. 2 oz. 2.00 4 K 3881E-Earrings, clip back. ¾ inches. Shpg. wt. 2 oz. 2.00





Also  
Larger Women's  
sizes

*Need it now? Just "Change It"...*  
*see inside front cover*

## Handsome Textured Fabrics

Versatile costume in shantung-textured cotton and Cupioni® rayon. Slim dress is sleeveless with scoop neckline, front and back; side zipper. Brief jacket is fitted. Dry clean.

Half sizes 14½, 16½, 18½, 20½, 22½, 24½. State size.  
X 31 K 3720—Navy blue  
X 31 K 3722—Dark brown  
X 31 K 3721—Black  
Shpg. wt. 11 oz. ... \$6.84

Casual dress in a rich-textured fabric of 92% rayon with 8% silk. Step-in style zips to below waist with tab-trimmed fly front closing; shoulder flanges. Hand wash separately.

Half sizes 14½, 16½, 18½, 20½, 22½, 24½. State size.  
X 31 K 5833—Parakeet (light) blue  
X 31 K 5834—Navy  
Shpg. wt. 1 lb. .... \$9.54

Attractive coat dress in shantung-textured rayon. Tucked 'n' gored skirt; white overcollar. Hand wash alone. Shpg. wt. 2 lbs. Half sizes 14½, 16½, 18½, 20½, 22½, 24½. State size.

X 31 K 6685—Navy  
X 31 K 6686—Black \$10.84  
Larger Women's sizes 46, 48, 50, 52. State size.  
X 31 K 6687—Navy  
X 31 K 6688—Black \$11.84

Numbers on these 2 pages beginning with "V" shipped from Philadelphia or Chicago, whichever is nearer; with "X" from Philadelphia, Chicago, Kansas City or Atlanta, whichever is nearest. Others from mail order house. Allow postage from mail order house



## Embroidery

Youthful dress of linen-look rayon with richly embroidered white panel and open-work. High V-neckline and zipper in back. Unpressed pleated skirt. Hand wash separately.

Half sizes 12½, 14½, 16½, 18½, 20½, 22½. State size.  
Shpg. wt. 1 lb. 5 oz.  
V 31 K 7540—Copper tan  
V 31 K 7541—Light green..... \$12.84



# linen-look fabric



**Touches of White** on a coattress with tucked 'n' gored skirt. Rayon with airy leno weave; hand wash separately. *State size.*

*Half sizes 14½, 16½, 18½, 20½, 22½, 24½. Shpg. wt. 1 lb.*

X31 K 3734—Navy blue  
X31 K 3735—Lilac  
X31 K 3736—Beige.....\$6.84

*Larger Women's sizes 46, 48, 50, 52. Shpg. wt. 1 lb.*

X31 K 3737—Navy blue  
X31 K 3738—Lilac  
X31 K 3739—Beige.....\$7.54

**Color-matched Embroidery**, lavishly done in a handsome, all-over pattern on fine quality rayon. Dress has piping of acetate satin around the neckline. Back has long zipper and high V-neckline. Rhinestone pin included. Hand wash separately. *Half sizes 12½, 14½, 16½, 18½, 20½, 22½. State size.*

X31 K 6672—Ivory  
X31 K 6673—Lt. opaca blue  
Shipping weight  
1 pound 8 ounces.....\$10.84



**Lace Flowers** bloom on the front of this coat dress. Side-seam pockets. Rayon . . hand wash separately. *Order correct size. Half sizes 14½, 16½, 18½, 20½, 22½, 24½. Shpg. wt. 1 lb. 6 oz.*

X31 K 5825—Lilac

X31 K 5826—Rose pink. \$8.84

*Tall Women's 38T, 40T, 42T, 44T. Shpg. wt. 1 lb. 6 oz.*

X31 K 5855—Lilac

X31 K 5856—Rose pink. \$9.54

**White Tassel and Braid** embroidery add a dashing touch to this dress and its brief jacket. Dress has a high neckline in back; side zipper. Firmly woven rayon . . hand wash separately. *Order correct size.*

*Half sizes 12½, 14½, 16½, 18½, 20½, 22½; Women's sizes 38, 40, 42, 44. Shpg. wt. 1 lb. 3 oz.*

X31 K 5837—Lilac

X31 K 5838—Beige.....\$9.84

*More Tall Women's sizes on pages 47, 48, 51 and 63.*

Dresses on these 2 pages shipped from Philadelphia, Chicago, Kansas City or Atlanta, whichever is nearest. Allow postage from your Mail Order House. Measure before ordering . . see page 646.